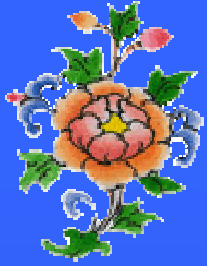


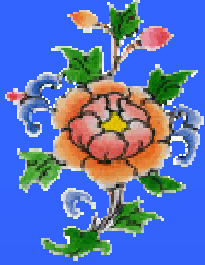
# Country Presentation Bhutan

National Presentation for Implementation Arrangements for Male Declaration Phase II



# Bhutan and its neighbours





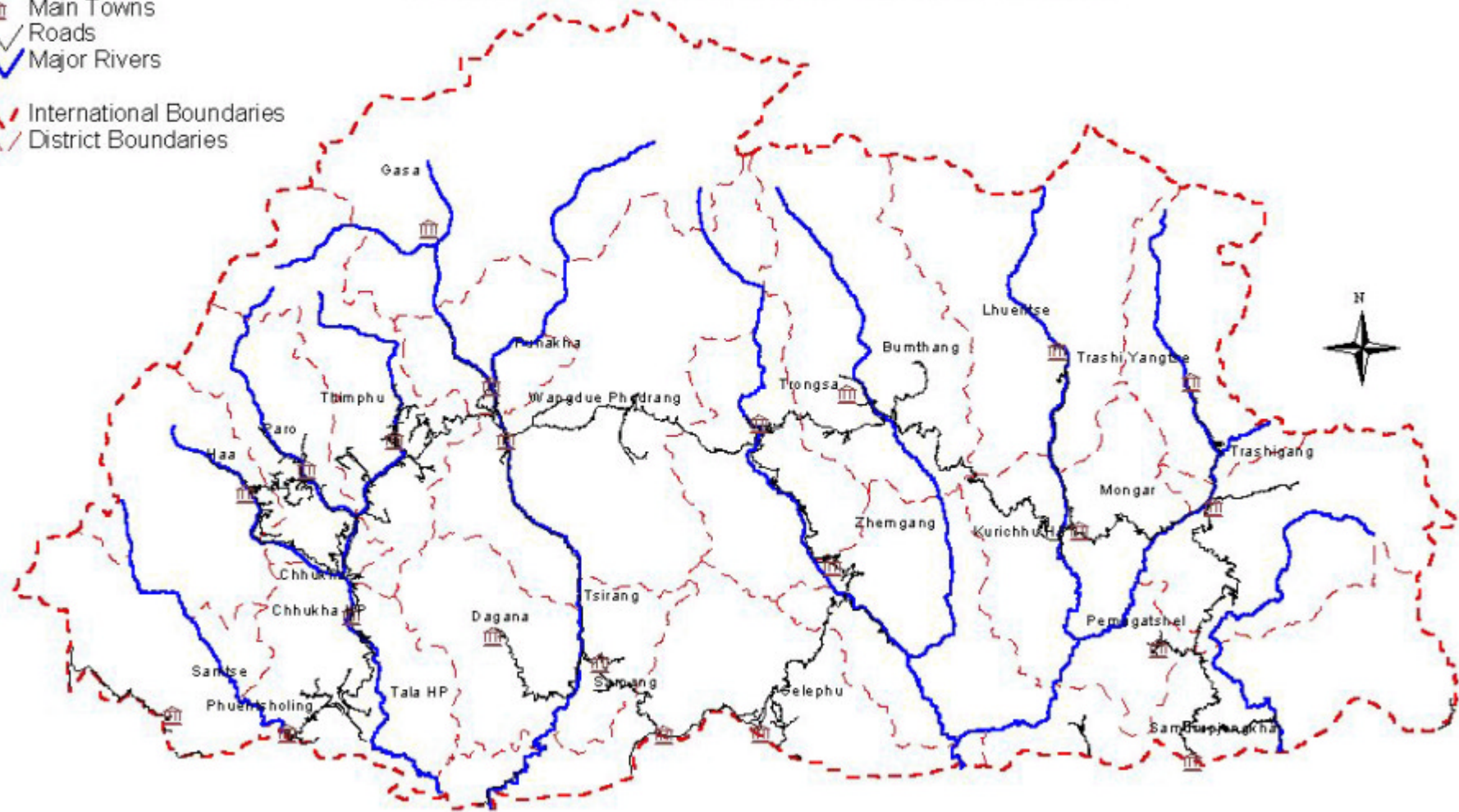
# Brief Background

- **Area:** **46,500 square km**
- **Population:** **637,777**
- **Capital:** **Thimphu**
- **Districts:** **20 Numbers**

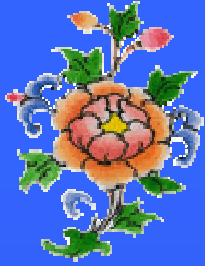
# BHUTAN

## Administrative Boundaries, Major Rivers and Main Towns

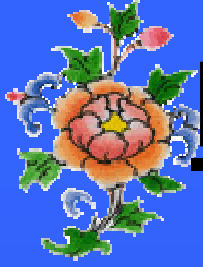
-  Main Towns
-  Roads
-  Major Rivers
-  International Boundaries
-  District Boundaries



20 0 20 40 Kilometers

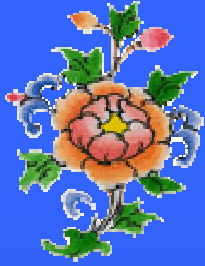


<b>Total Area (sq km)</b>	<b>40,077</b>
<b><i>Land-use</i></b>	<b>(%)</b>
<b>Forest Cover</b>	<b>72.5</b>
<b>Cultivated areas</b>	<b>7.7</b>
<b>Pasture</b>	<b>3.9</b>
<b>Rocky outcrop</b>	<b>5.0</b>
<b>Marsh</b>	<b>0.9</b>
<b>Others</b>	<b>2.5</b>



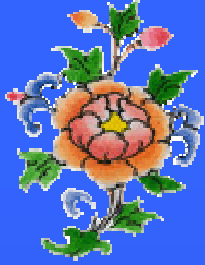
# Proposed sites for monitoring stations in Gelegphu

- Lodrai
- Jigmeling
- Bhur



## Bhur station

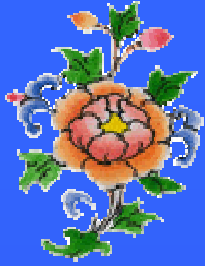
- Latitude: 26
- Longitude: 90
- Above sea level: 375
- Distance to town: approx. 5 km
- Currently there is an agriculture farm and a basic met. Station situated there.



# Institutions involved

1. The first would be the Ministry of Trade and Industry particularly as they have the Department of Power under them.
2. The Ministry of Agriculture with the Forestry Services
3. District Administration of Sarpang
4. Local community

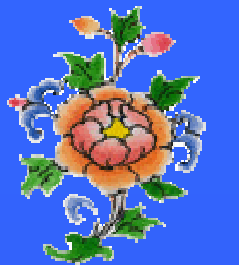




# National Advisory Committee

- Ministry of Agriculture
- Meteorology Unit
- Department of Forestry
- Dzongkhag Administration
- Local community
- Ministry of Communications
- National Environment Commission Secretariat
- Private Sector

National Presentation for Implementation Arrangements for Male Declaration Phase II



**THANK YOU**

National Presentation for Implementation Arrangements for Male Declaration Phase II